



*This is Capital. This is our story.*

# 1910's

LATE IN THE YEAR OF 1916, a small group of friends met for a prayer meeting in the home of Matilda Hatfield, wife of Sacramento attorney, William Hatfield. Mrs. Hatfield had gone to Los Angeles and received the baptism of the Holy Spirit as a result of the Pentecostal outpouring at Azusa Street. She was eager to share her experience and invited a few ladies into her home to pray. This prayer meeting was most significant because it blossomed into one of the largest churches on the West Coast, known today as Capital Christian Center.

The prayer meeting grew to a gathering in an Oak Park store front and by 1917 grew to about 25 in number and the Pythian Castle on 9th and I Streets was rented.

THIS IS CAPITAL. THIS IS OUR STORY.

# 1920's

IN 1920, IT WAS EVIDENT THEY NEEDED A PASTOR and Reverend Albert Stuernagle, who had been leading Bible studies at the time, was elected to be their leader. The small-but-earnest group of believers was organized as the Full Gospel Church. They were busy days for **PASTOR STUERNAGLE** as he used to bicycle to make his pastoral calls. He was growing the church one visit at a time in downtown Sacramento, which ended at 28th and Broadway, the end of the streetcar line. Pastor Stuernagle gave our church a strong beginning purchasing the first property at 21st and K Streets and incorporating in 1922. He was followed by **PAUL RALSTON** who had grown the church to about 50 members. Followed then by **REVEREND WESLEY R. STEELBERG** who had several significant accomplishments including uniting Full Gospel Church with the Assemblies of God and merging Oak Park Assembly with the church and changing the name to Full Gospel Tabernacle in 1928.



the houses of the Spirit. Many such prayer times in Mrs. Hatfield's home. Albert Stuernagle, a minister who was Spirit-

then, said when he and Brother Stuernagle used a bicycle to make his pastoral calls. This was not such a difficult task as it would be today.

Daisy, who was also a missionary, and was married. Before he could finish one term on the field, John contacted blackwater fever and died.

to receive the done!"

His ministry was as the church support Daisy in her endeavors. Daisy, John Kenn missionary, and have spent many beloved Africa.

Following the the Stuernagle Paul Ralston was Full Gospel Ralstons were lived in the apa church. Mrs. beautiful sing blessed the ch music.

While the R Sacramento an added onto the which more th seating capaci tuary. Two mo ments were ad stairs. During congregation m tent at 28th an Evangelist Stigl conducted meetings. The remember this introduction family. Other na to the roster, H her family, the and the Pfahls. came to help R church music a



The Executive Presbytery at the First General Council in 1914 in Hot Springs Arkansas

The Azusa Street Mission in Los Angeles as it appeared in 1928-1929





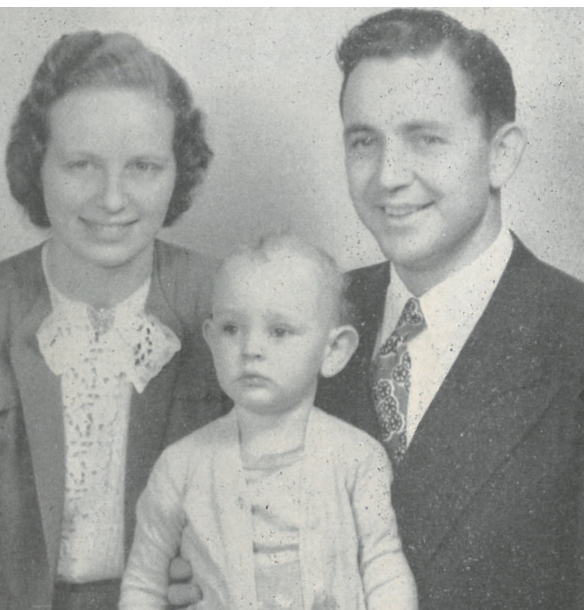
# 1930's

**I**N THE 1930'S, DURING THE GREAT DEPRESSION, the church didn't stop growing. It was debt free by 1932 and the members were full of faith. From 1934-1936, everything that was given above expenses went into a savings account which grew to \$6,000 and was considered a miracle due to the economy. It was a true testimony of God's greatness. **PASTOR W. T. GASTON** took over in 1936 after leaving his position as the General Superintendent of the entire Assemblies of God. Soon after Brother Gaston came, the name of the church was changed by popular vote to "Bethel Temple" which means House of God. The church had grown to 175 members, averaging 300 in Sunday School. Gaston emphasized the power of the Holy Spirit and physical healing. With the growth, we traded property on 21st and K Streets for the corner of 21st and W Streets and launched a building program. During the depression, the bank was hesitant to loan money, but because of the \$6,386 saved in the bank and good credit, the bank agreed to match whatever the people gave. Members and friends made personal loans and gave to the church to start construction. True to their word, the funds were matched and the new building was built costing \$27,000. The debt was paid within four years. Much of the building was done by volunteers and others were paid 50 cents an hour. The Sanctuary seated 750 and attendance picked up immediately.



# 1940's

**G**ASTON LEFT IN 1944 AND BECAME SUPERINTENDENT of the Northern California/Nevada District and **NELSON E. HINMAN** was called to be pastor. He served for seven years and gained a new measure of respect throughout the Sacramento area. With the launch of World War II, many members were in the military. They would hear news from home through a small monthly publication titled, "Notes from Home." Pastor Hinman began radio broadcasting on a weekly basis in 1945 on KFBK on a show called, "The Voice of Bethel."



This is what you would hear:

*"This is none other but the house of God: this is the gate of Heaven. And he called the name of that place Bethel . . . The Voice of Bethel brings you sacred melodies and meditations - half an hour of the Gospel in word and song from Bethel Temple, Sacramento's First Assembly of God, 21st and W Streets. Pause with us, friend, for the spiritual lift that will help you through your busy days, with Keith J. Hill at the console of the Temple organ . . . and this is your Bible Counselor, Nelson E. Hinman, the Temple pastor."*

Through this broadcast and other community activities, the church became known throughout the city. Bethel sponsored two branch churches (or church plants) during these years—Bethany Church pastored by Dwight Burchett, and North Highlands Assembly pastored by Mrs. Francis Brown.







# 1950's

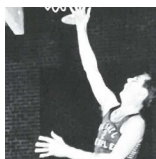
**I**N 1951, **PASTOR CLYDE AND ALPHA HENSON** began 20 years of spectacular ministry. Pastor Henson continued the local "Voice of Bethel" radio programs and increased its coverage to over two-thirds of the world through the Far Eastern Broadcasting company. For many years, this extensive radio ministry was totally underwritten by members of the congregation, John and Minnie Sandburg. John was converted as a result of a religious radio broadcast and felt deeply burdened to proclaim the good news through the medium of radio. He came into the church office each month with his check, laid it on Pastor Henson's desk and said, "Now Pastor, let's pray over this money that it might be effective in winning the lost to Jesus."

Pastor Henson pioneered religious telecasting in Northern California. For 10 years "Our Story" was a popular weekly television program and one of Channel 10's first experiences with live programming. The church carried the expense for these telecasts for the first seven years, but the last three were underwritten by Channel 10 as a public service.

## THE SINGING CHRISTMAS TREE

In the fall of 1957, Clyde Henson was discussing the upcoming Christmas program with church member Bill Forbes. "What are we going to do with the music department this year," asked Pastor Henson. Searching for an answer, Bill retorted, "Why don't we hang them from a Christmas tree?" They both chuckled. However, before the day was over they had a balsa model of a tree in their hands and a dream in their hearts. In December of that same year, standing atop a somewhat shaky wooden scaffolding, the very first Singing Christmas Tree was presented at the Governor's Hall, located on the old State Fairgrounds. A brand-new and much sturdier steel structure was designed and completed in time for the Tree in 1959. That year, the production was performed in the Sacramento Memorial Auditorium, where it was to remain for the next 16 years. To accommodate the growing audience, the venue was then moved to the Sacramento Community Center. In 1979, Pastor Glen Cole's desire was to see the Tree performed at the church. The decision was made to bring the Tree home.

Each year hundreds of volunteers spend thousands of hours preparing and rehearsing for the Singing Christmas Tree. They assume various roles – singers and musicians, dramatists and dancers, set builders and costume designers. To each of them, the Singing Christmas Tree is an opportunity to honor the One whose birth we observe, and to bring the remarkable Christmas story to life! This year we are celebrating 60 years of the Singing Christmas Tree.



# 1960's

**I**N 1961, 10 ACRES OF LAND WAS PURCHASED at Howe Avenue. The property at 21st and W streets was sold to the State of California and a freeway has erased all but the beautiful memories of days gone by. Pastor Henson's enthusiasm for evangelism and missions and his thought-out goals created a strong desire among the members for church worship according to the New Testament pattern. He often said as he called the congregation to prayer on Sunday morning, "Don't be a spectator at the altars of God, be a participant!"

Bethel's missionary arms gradually encompassed the world. It was Pastor Henson's vision that the ministries of Bethel be felt around the world, which led to the design of the beautiful globe sign that stood in front of the church. The annual missions convention was always a time of rejoicing, funding new projects, and adding missionaries to our growing family. The church sent Pastor and Mrs. Henson on a tour of the mission stations we supported which enhanced their vision. As a result of their compassion and zeal for missions, the church sponsored 59 missionaries and averaged more than \$5,000 in monthly support. Today, we support over 215 missions and missionaries, both foreign and domestic, averaging \$40,000 per month.

The sparkle of the 60's in our history was enhanced by Alpha Henson, the first lady. Lady H, as she was better known, led the women's activities, was always available for counseling, prayer, and a bit of cheer. She also began keeping record of birthdays and anniversaries and sent cards to members of the congregation. This tradition is still being upheld today!

Clyde Henson showed his great love and admiration for his church congregation when he said, "To have had a part in Bethel Temple during these recent years and to catch the faith of her people is for Mrs. Henson and me a blessing indescribable. So to the faith of the past, I pay tribute and stand on tip toe to see her future, I see it even more glorious than the past." Thank God for such a man of faith and courage.







# 1970's

IN 1971, PASTOR HENSON PASSED AWAY AFTER LOSING HIS FIGHT with cancer, and associate **PASTOR ROLAND HASTIE** was voted in. **MELVIN BREWER** became senior pastor in 1973, followed by **GLEN D. COLE** in 1978. Under the leadership of Pastor Glen and Mary Ann Cole, and the vote of the church, the name was changed to Capital Christian Center. The attendance grew quickly under Pastor Cole's leadership. Attendance went from an average of 600-700 to over 1,100 in a few months and multiple services were added. The passion for excellence and development of a whole person intellectually, socially, physically, and spiritually led to great growth and enthusiasm.

Capital Christian School began in 1977 with pre-school through ninth grade and quickly changed to accommodate all 12 grades, with 169 enrolled in the first year. The school was founded as an evangelistic discipling arm of the church. Almost 40 years later, the school is thriving in all areas and fulfilling their mission: Capital Christian School prepares students to navigate the issues and realities of life by developing their spiritual, academic, social, and physical potential, all from the foundation of biblical truth. Enrollment is now at 1,200 students.



# 1980's

IT WAS WITH A GREAT SENSE OF ANTICIPATION and excitement that Capital Christian Center entered the 80's, a decade marked by rapid growth and development. Because of stacked parking, overflow seating, classrooms and nursery bursting at the seams, the decision was made to relocate and build a new facility that could accommodate our growing congregation. Within months, the Howe Avenue property sold and the current 63-acre site on Micron Avenue was secured. Construction of the new church and school buildings began. In the spring of 1984, we dedicated and moved into our present-day facility.

Referred to as the "decade of harvest," the 1980's were times of unprecedented growth. Thousands of individuals made the decision to follow Christ and as their lives were transformed so were their families. Pastor Cole's vision was that the church would be a place where people could come together and be met on every level – spiritually, intellectually, socially, and physically. A beacon in the community, people gathered to worship, to learn, and to experience community.

Salvations. Baptisms. Small groups. Serving. Giving. Missions. Prayer. Together, individuals became family. Together, we built and grew. The completion of the 18-acre athletic complex and two new educational buildings were the final projects of the decade, and as we prepared to move into the 90's, there was a renewed focus on prayer.





# 1990's

**T**HE 1990'S WERE A SEASON OF RESETTLEMENT for many refugees. Several members of the church aided in a resettlement project as Sacramento County saw over 3,500 refugees seeking help including a large Russian and Armenian community.

In 1995, Pastor Glen Cole retired after 17 years of serving as Capital's senior pastor and the church voted and installed **PASTOR RICK AND CATHY COLE** as the tenth pastor of this church. Community outreach became a focus and vision of the church with the Family Fun Fair, Convoy of Hope, Lincoln Village Outreach, and prayer efforts. The church continued to grow and expand while we saw the completion of the high school gymnasium which has provided additional sports outreaches and state-of-the-art facilities for the school and church. We also saw a racial unity like never before during this period by bringing the Martin Luther King, Jr. community celebration to our campus. The event filled our Sanctuary with praise to God and crossed cultural and ethnic barriers.



# 2000's

**T**HE 2000'S COULD BE MARKED BY THE ENHANCED vision to reach our community. We launched several new outreaches in this decade including: Christmas to the Streets at the Union Gospel Mission, which provides food, blankets, and supplies to host the homeless; The Singing Christmas Tree VIP night for the homeless, our Rosemont neighbors, and local shelters and foster programs; One Day to Prevent Homelessness where we gave \$400,000 which was matched by a \$1.6 million grant. More than 1,000 families moved into permanent housing through this effort. Character Combine began in 2004 and led hundreds of coaches and players through sportsmanship development and offered numerous tools to succeed on and off the field. Equal Start was founded in 2005 to impact education in the local underprivileged schools, giving every child an equal opportunity. Pastor Rick and a few staff members ran a marathon to help raise funds for schools where 90 percent of the children are on the federal free lunch program. Through fitness and nutrition education, Be Change's end game helped kids get quality and accessible health care. Celebrate Recovery was launched in 2006 which directed people to group studies and steps to help overcome hurts, habits, and hangups.



# 2010's

**T**HE LAST SEVERAL YEARS HAVE BROUGHT about growth and a change like never before. With the clear vision of Truth (know it), Growth (pursue it), and Love (give it), we saw miracles happen. In 2011, Pastor Rick wrote the book *SoulDesign, A Roadmap for Personal Growth* with the help of Pastor Doug Reid and Pastor Jason Harper. It was followed in 2012 by *SoulDesign, Living a Life of Love*. Evening of Dreams in 2012 brought the special needs community on campus for a life-changing prom. The Performing Arts building was filled to capacity as hundreds were impacted for life. In 2012, we had the privilege of leading the way in providing Winter Sanctuary for the homeless during the winter months. We provided dinner and lodging for over 100 persons each night with the help of about 30 other churches. In 2014, there was a shortfall of funding and Pastor Rick had a God-idea to live among the homeless for two weeks in order to draw awareness to the need and raise the necessary funds. The funds were raised and it was truly a divine miracle. The County has taken over the project and now completely funds this program.

As we come upon our 100-Year Celebration in 2016, we are filled with excitement for the next 100 years. We have been serving Sacramento for a century and we are not stopping here. We just restated our mission to Gather, Grow, and Go!

